

# The Curator's Odyssey

SL MOOD BOARD



The luxury Spring/Summer 2017 collection is inspired from the journey of a contemporary, independent Parisian individual from Chantilly Paris to Lucknow, India in search of inspiration.

The traveler tries to explore the similarities and contrasts in the culture of a country which is different and unique from Paris. In the course of his journey, he finds links between the two, and juxtaposes elements from either culture to create a fusion of the two. What results is an eclectic remix- a surreal, romantic atmosphere, which he tries to capture and translate.

The collection has an essence of earthiness and experimentation. The traveler is inspired by the heritage and traditions of a city so deeply rooted in history. The emotions he experiences are portrayed through this collection. The garments are contemporary, yet there is a strong influence of traditional craftsmanship, refined taste for materials, exclusive fabrics, prints, geometric patterns and embroidery used to impart individuality to the collection.



## 3.2 DERIVATION OF COLORS

The colors for the collection are based on market analysis, trend study and from the mood board itself.

The A/W 21 season offers a quiet and contemporary palette. Five shades of grey range from lighter near neutral levels of chipre grey to darker muted Indigo and Blue tones are a highlight across the accessories market, with rich shades conveying a premium aesthetic for tailoring, smart shirts and button weights. Rich neutrals range from light to medium tones and have given an aesthetic heritage feel. White continues across all the brands, it is a classic accessory color and combined it with cool grays achieves the contemporary appeal.



6.8 EXPLORATIONS OF PRINTS



EXPLORATIONS OF PRINTS



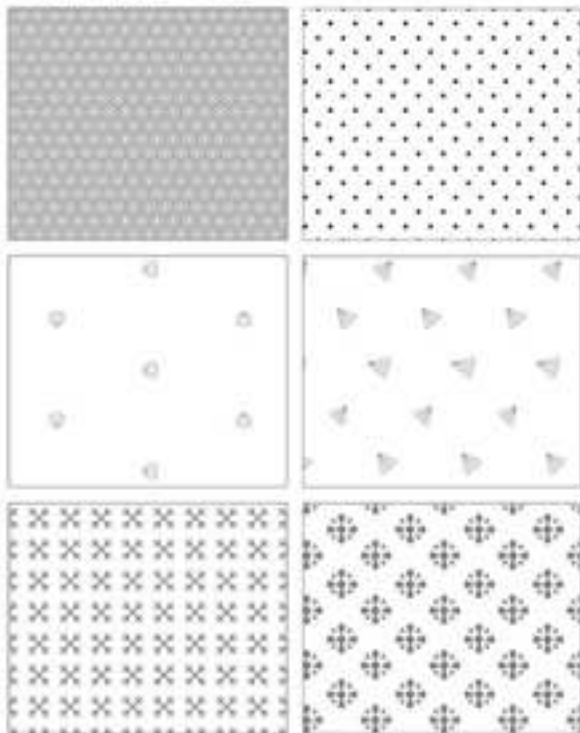


The collection unfolds the journey of a traveler in search of inspiration from the similarities and differences of two different cultures. The motifs and patterns are drawn from different architectural backdrops and the textures of a life, the incredible angles and lines, triangles, squares, circles and rectangles, et al., woven into the fabric and convey cultural narratives. The designs translate poetically



the various weave structure, prints and embroidered that the traveler captures in his eyes. The traveler also tries to draw parallels between the famous Charkhi tale and the Charkhi embroidery, the attraction and direct interpretation of which are brought to life in this collection.

54 EXPLORATIONS OF EMBROIDERY



EXPLORATIONS OF EMBROIDERY

